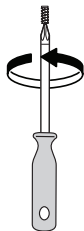
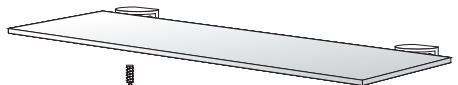
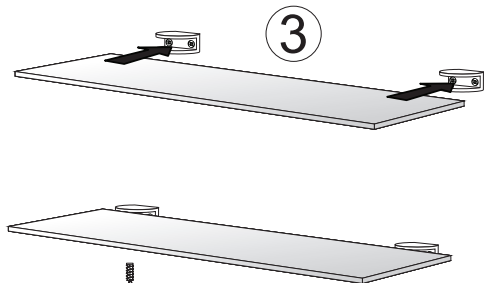
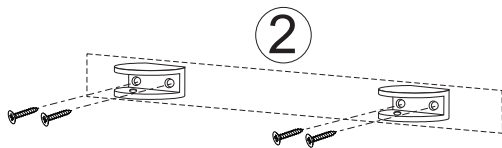
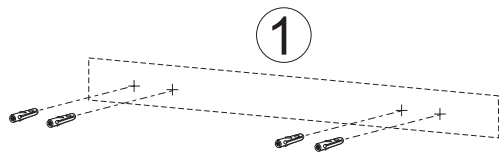


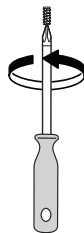
# Gebrauchsanweisung


## Glasplattenhalter

|            |   |            |   |
|------------|---|------------|---|
| <b>GB</b>  | Assembly instructions<br>Glass panel support              | <b>PL</b>  | Instrukcja użytkowania<br>Uchwyt na szklany talerz  |
| <b>FR</b>  | Mode d'emploi<br>Support de plaque en verre               | <b>CZ</b>  | Návod k použití<br>Držák skleněné desky             |
| <b>NL</b>  | Gebruiksaanwijzing<br>Houder voor glasplaat               | <b>SK</b>  | Inštrukcie na používanie<br>držák sklenenej dosky   |
| <b>IT</b>  | Istruzioni per l'uso<br>Portapiatti in vetro              | <b>SI</b>  | Navodila za uporabo<br>Držalo za stekleno ploščo    |
| <b>ES</b>  | Instrucciones para el uso<br>Soporte para placa de vidrio | <b>HR</b>  | Upute za uporabu<br>Držac staklene ploče            |
| <b>PT</b>  | Instruções de uso<br>Porta-placa de vidro                 | <b>HU</b>  | Használati utasítás<br>Üveglemez tartó              |
| <b>DK</b>  | Brugsanvisning<br>Glaspladeholder                         | <b>RO</b>  | Instrucțiuni de utilizare<br>Suport placă de sticlă |
| <b>SE</b>  | Bruksanvisning<br>Hållare för glasplatta                  | <b>BG</b>  | Инструкции за употреба<br>Държач за стъклена плоча  |
| <b>FI</b>  | Käyttöohjeet<br>Lasilevyn pidike                          | <b>BIH</b> | Uputstvo za upotrebu<br>držac staklenih ploča       |
| <b>IS</b>  | Leiðbeiningar um notkun<br>glerplötuhaldari               | <b>GR</b>  | Οδηγίες χρήσης<br>Γυάλινη βάση                      |
| <b>EST</b> | Kasutusjuhend<br>klaasplaadi hoidja                       | <b>TR</b>  | Yapışkan bant<br>Cam tabak tutucu                   |



4



 max. 0,5 kg